

Outdoor ADS-B Station  
ADSB-RE1090P

AvionixTech

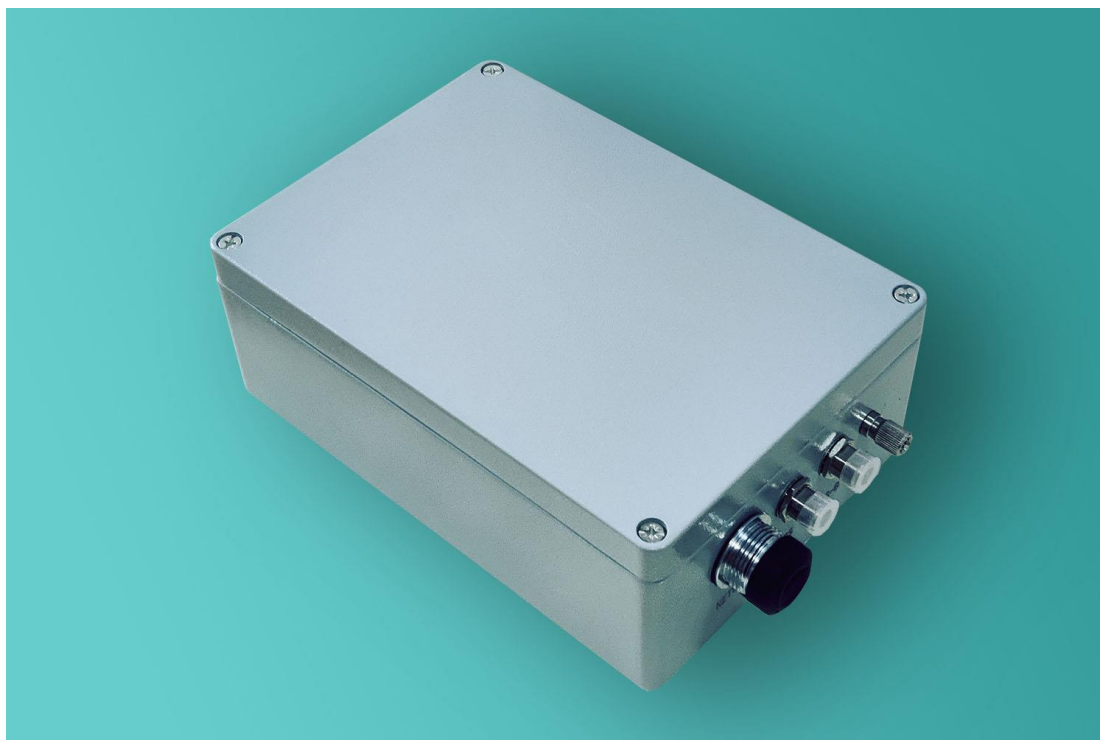
1. Introduction.....	3
2. Functions.....	4
2.1 Data Formats.....	4
2.2 Functions for your convenience.....	4
3. Specifications.....	5
4. Optional .....	5
5. Special use case .....	6
6. Connection.....	6
6.1 ADSB-RE1090P connect with computer directly .....	6
6.2 ADSB-RE1090P connect with router .....	6
7. Configuration.....	7
7.1 Log in and Start.....	7
7.2 Network configuration .....	8
7.3 Dataport configuration.....	11
ASTERIX CAT21 data.....	11
CSV plaintext data .....	14
JSON plaintext track data.....	15
ADS-B and Mode-S raw message data.....	18
AVR Data .....	19
8. ADS-B display software ADSBScope .....	20
9. Antenna.....	22

## 1. Introduction

ADS-B (Automatic Dependent Surveillance - Broadcast) is a system or a technique. ADS-B uses airborne GPS and several other equipment to obtain the aircraft own position and other information, then uses communication equipment onboard to transmit the aircraft own position and other information. ADS-B stations and other aircrafts around can use communication equipment to get this information, so to monitor the aircraft, or to say, “see” the aircraft.

The main ground surveillance technique used to be radar. Radar is expensive, a lot of work to install and maintain. While ADS-B stations are cheap, easy to install and maintain. A cheaper and easier way for ground surveillance solution, even possible to replace radar in the future.

ADSB-RE1090P is a high performance and easy to use ADS-B station. ADSB-RE1090P is the outdoor version of ADSB-RE1090.





ADSB-RE1090P includes:

- ①、 ADSB-RE1090 unit \*1
- ②、 Waterproof RJ45 connector \*1
- ③、 PoE power \*1
- ④、 GPS antenna with clamp \*1
- ⑤、 GPS antenna cable 2 meters \*1 (please indicate if you need longer cable)
- ⑥、 ADS-B antenna cable 10 meters \*1 (please indicate if you need longer cable)
- ⑦、 ADS-B antenna \*1 & ADS-B antenna clamp \*2
- ⑧、 ADSB-RE1090P unit clamp \*2

## 2. Functions

### 2.1 Data Formats

- ADSB-RE1090P can output ADS-B messages via network cables in different data formats. Including CSV plaintext (decoded data, you can easily get longitude, latitude, altitude, speed, flight ID... without complicated decoding by yourself), Asterix Cat021, json (also decoded data), DF17/18 raw messages and AVR.
- ADSB-RE1090 can also receive and output Mode-S messages and Mode A/C messages.
- ADSB-RE1090P can output data with GPS timestamp.

### 2.2 Functions for your convenience

- ADSB-RE1090P can be connected via network cables.
- ADSB-RE1090P supports static IP address and DHCP.

- ADSB-RE1090P IP address can be configured to connect with computer without routers. Of course ADSB-RE1090 can also be configured to connect with computer with routers, all up to you.
- One ADSB-RE1090P can send data to multi clients.
- Work with adsbscope display software.
- Weather resistant with IP67 design.
- Have surge protector and grounding stud, easy to ground when installed on site to protect ADSB-RE1090P from lightning.

### 3. Specifications

- Frequency: 1090 MHz
- Sensitivity: better than -93 dbm
- Coverage: >350 km
- Power Supply: PoE
- Physical Size: 34\*23.5\*9.5 cm (not include antenna connectors)
- Antenna Connector: N/F

### 4. Optional

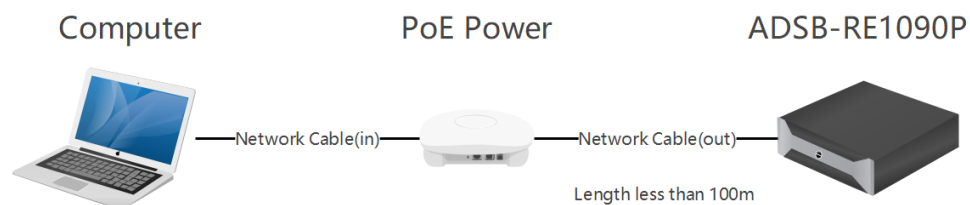
- V4A stainless special steel ADS-B antenna to prevent salt erosion for off-shore use.
- Dual unit for high reliability.
- ATC display software.
- OEM/Customization. All our products can be supplied fully customized with your brand and logo. We can even do customized form factors, enclosures and packages on your requirement. This OEM/Customization service enables you to have your own unique product in minimal time with no risk.
- IQ data output and storage. We can output and storage IQ data for your analysis. Please don't hesitate to contact us providing your specific requirement.
- ADS-B, ACARS and AIS, three A receiver integration, is usually called 3A receiver. We can do this.
- Indoor version. We also provide ADSB-REP1090, which is the indoor version of ADSB-RE1090P for indoor use. Please refer to ADSB-REP1090 manual.
- You're welcome to provide any of your requirements, we'd be glad to work with you!

## 5. Special use case

- Outdoor use, with IP67 design.
- Off-shore use, with optional V4A stainless special steel ADS-B antenna.
- On ship, with optional V4A stainless special steel ADS-B antenna.
- Areas that have a lot of thunders, with surge protectors.

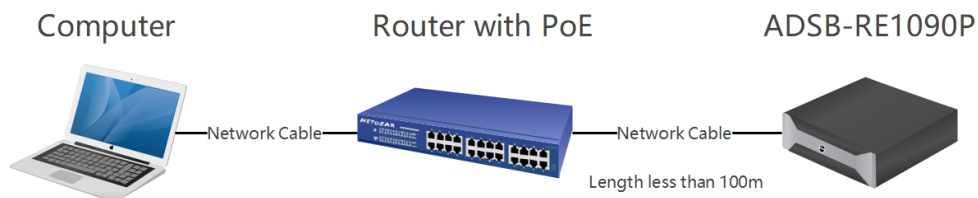
## 6. Connection

### 6.1 ADSB-RE1090P connect with computer directly

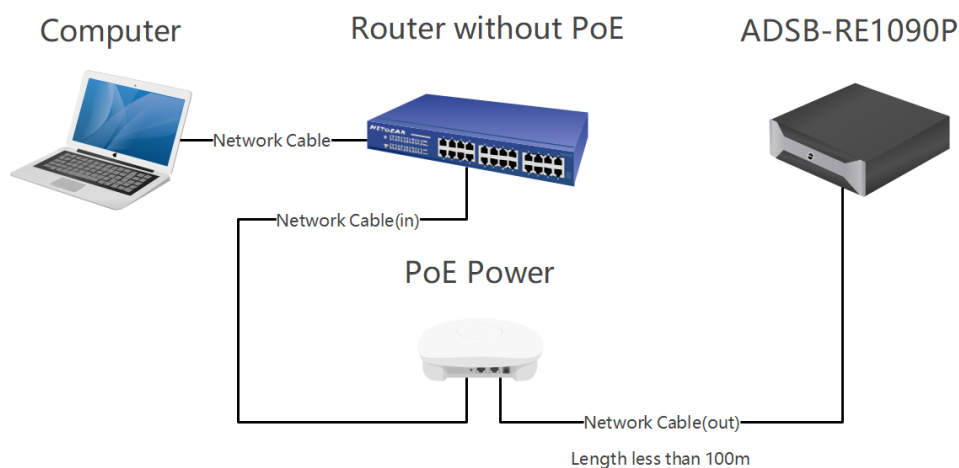


### 6.2 ADSB-RE1090P connect with router

#### 6.2.1 Router with PoE function



## 6.2.2 Router without PoE function



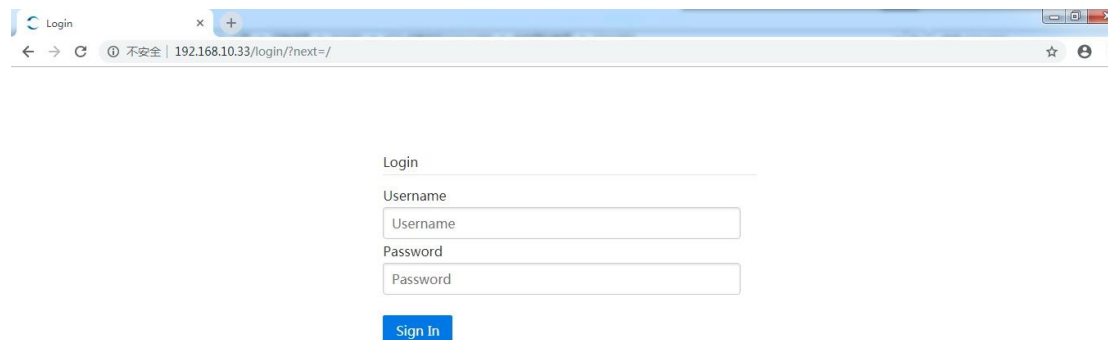
## 7. Configuration

The default cable network IP address of ADSB-RE1090P is: 192.168.10.33.

### 7.1 Log in and Start

7.1.1 Power on ADSB-RE1090P and connect ADSB-RE1090P to computer via network cable, and set the IP of the computer to the same network segment as the ADSB-RE1090P.

### 7.1.2 Enter the ADSB-RE1090P IP address 192.168.10.33 in browser



Login

Username

Password

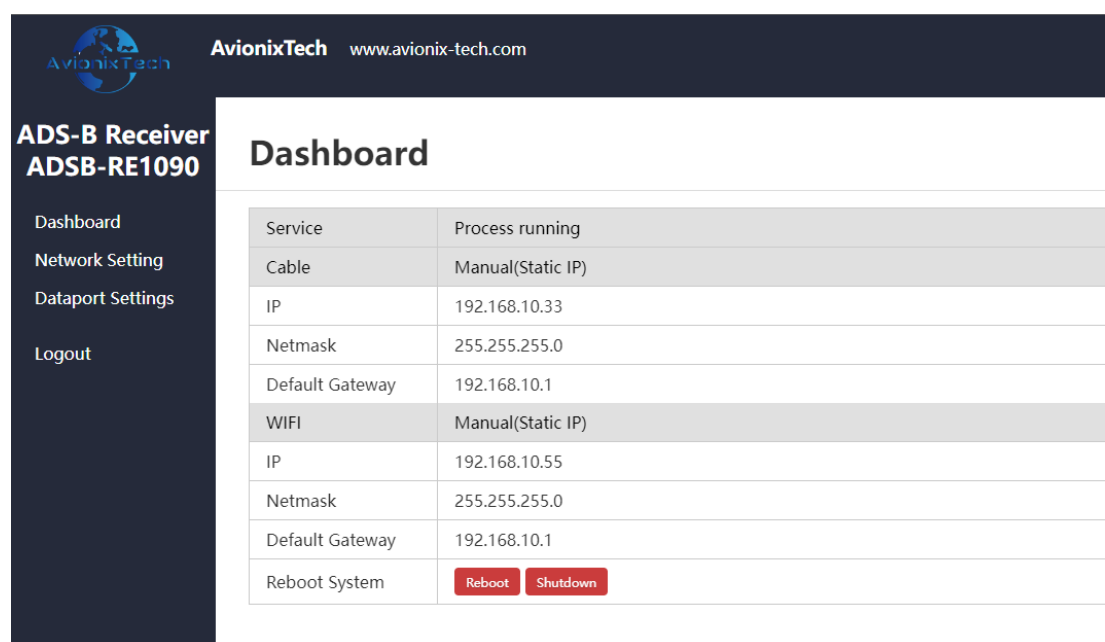
[Sign In](#)

### 7.1.3 Enter user name and password:

User name: admin

Password: aaareceiver

### 7.1.4 Enter ADSB-RE1090P control page Dashboard



AvionixTech www.avionix-tech.com

ADS-B Receiver  
ADSB-RE1090

Dashboard  
Network Setting  
Dataport Settings  
Logout

## Dashboard

Service	Process running
Cable	Manual(Static IP)
IP	192.168.10.33
Netmask	255.255.255.0
Default Gateway	192.168.10.1
WiFi	Manual(Static IP)
IP	192.168.10.55
Netmask	255.255.255.0
Default Gateway	192.168.10.1
Reboot System	<a href="#">Reboot</a> <a href="#">Shutdown</a>

The status of <service> should be <running>, otherwise click <start> to start service.

## 7.2 Network configuration

### Important note:

- **ADSB-1090P is the outdoor version and doesn't have WiFi, so no need to configure the WiFi.**



- **When you change ADSB-RE1090P to static IP, please make sure the IP address, subnet mask and gateway are correct. And make sure you remember all these configurations. Otherwise, you may not be able to access ADSB-RE1090P and you might need to send it back to us for reset.**

Click Network Settings:

AvionixTech www.avionix-tech.com

ADS-B Receiver  
ADSB-RE1090

Dashboard  
Network Setting  
Dataport Settings  
Logout

## Network Setting

Ip Address Assignment

**Cable** WIFI

Automatic(DHCP)  
 Manual(Static IP)

IP  
192.168.10.33

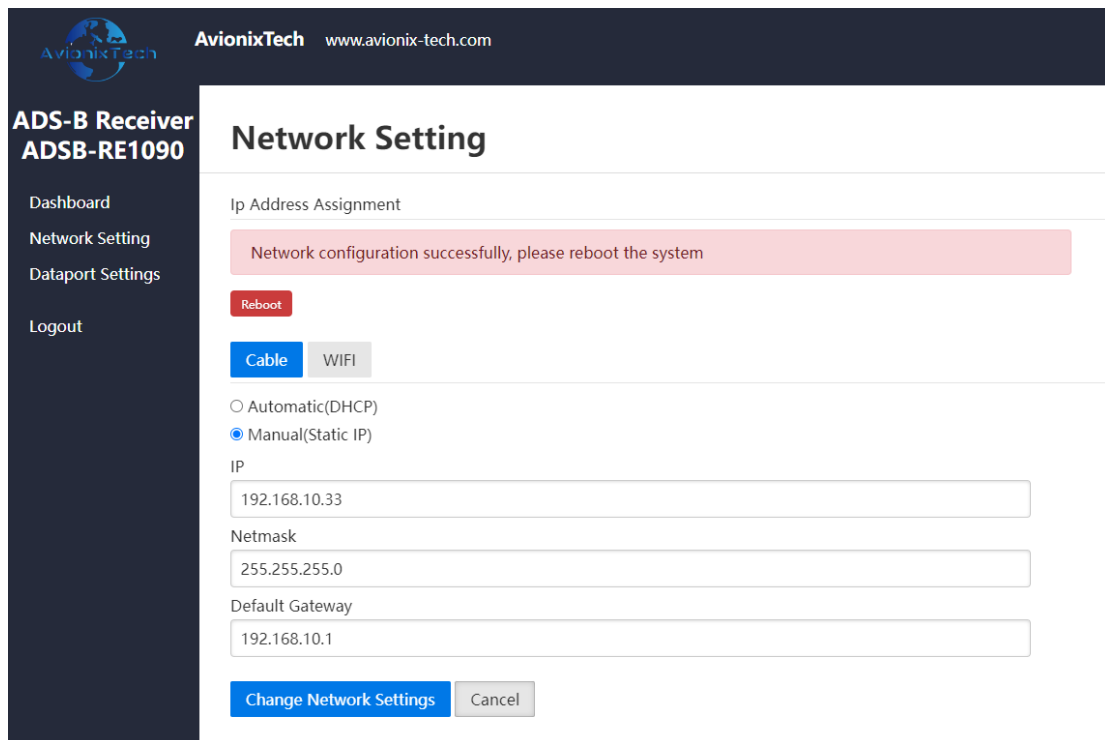
Netmask  
255.255.255.0

Default Gateway  
192.168.10.1

**Change Network Settings** Cancel

Click Cable to configure Cable network. Enter the IP address, subnet mask, gateway to configure.

Click Change Network Settings:



AvionixTech www.avionix-tech.com

## ADS-B Receiver ADSB-RE1090

Dashboard  
Network Setting  
Dataport Settings  
Logout

### Network Setting

Ip Address Assignment

Network configuration successfully, please reboot the system

Reboot

Cable WIFI

Automatic(DHCP)  
 Manual(Static IP)

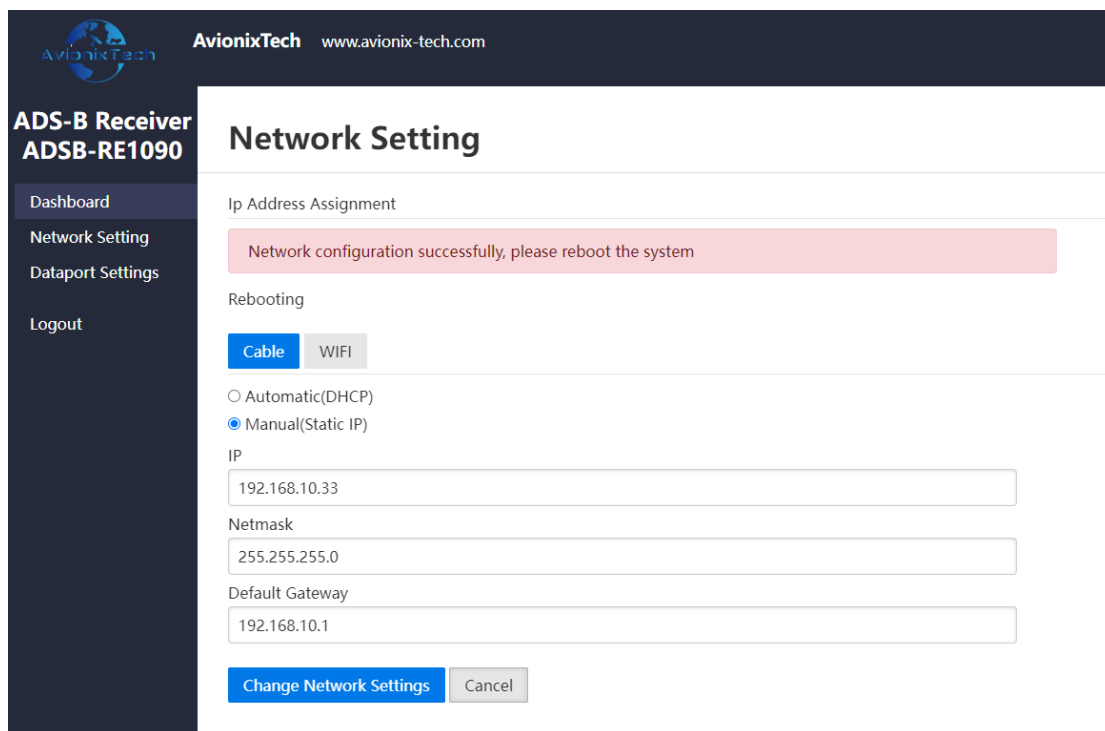
IP  
192.168.10.33

Netmask  
255.255.255.0

Default Gateway  
192.168.10.1

Change Network Settings Cancel

Click Reboot:



AvionixTech www.avionix-tech.com

## ADS-B Receiver ADSB-RE1090

Dashboard  
Network Setting  
Dataport Settings  
Logout

### Network Setting

Ip Address Assignment

Network configuration successfully, please reboot the system

Rebooting

Cable WIFI

Automatic(DHCP)  
 Manual(Static IP)

IP  
192.168.10.33

Netmask  
255.255.255.0

Default Gateway  
192.168.10.1

Change Network Settings Cancel

New IP address is valid after reboot. Log in on the new IP address.

ADSB-RE1090P supports DHCP. Open the router configuration page DHCP client list, you can see the IP address of ADSB-RE1090P (host name: receiver). As long as the computer is in the same network with ADSB-RE1090P, you can access the IP address obtained by ADSB-RE1090P through DHCP.

## 7.3 Dataport configuration

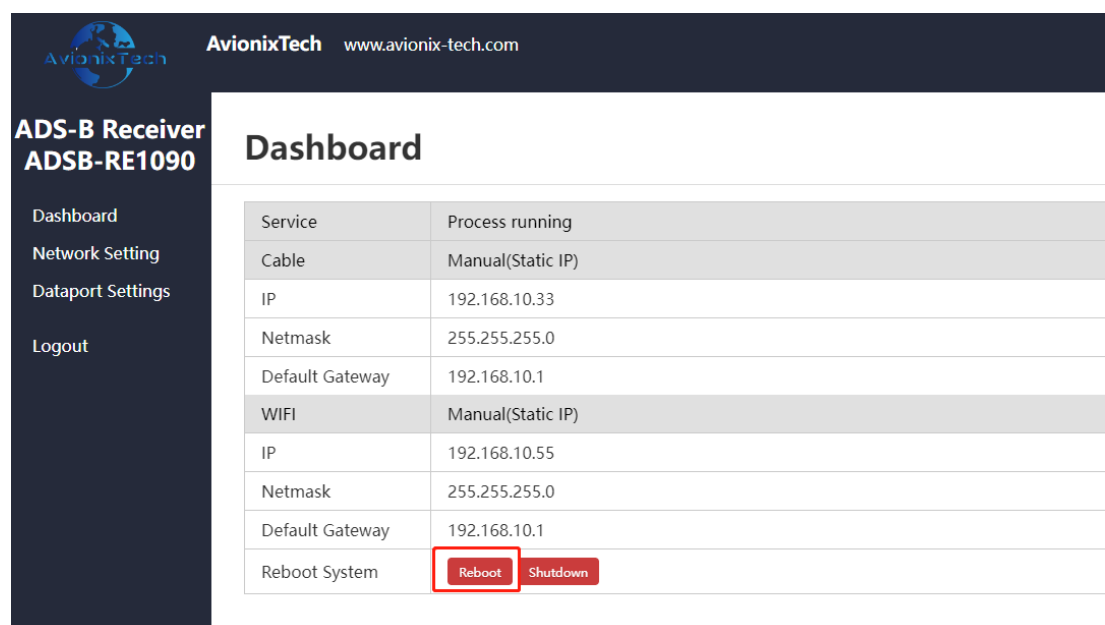
Click Dataport Settings:

ADSB-RE1090 support five different output data format:

- ASTERIX CAT021
- CSV plaintext Data
- JSON
- ADS-B, Mode-S and Mode A/C messages
- AVR

Different data format are configured separately and output simultaneously.

**Note: After configuration, you need to return to Dashboard and reboot the system for the configuration to take effect.**



The screenshot shows the AvionixTech ADS-B Receiver ADSB-RE1090 Dashboard. The dashboard is divided into a sidebar and a main content area. The sidebar contains the following menu items: Dashboard, Network Setting, Dataport Settings, and Logout. The main content area is titled 'Dashboard' and displays a table of network settings. The table has two columns: 'Service' and 'Process running'. The settings are as follows:

Service	Process running
Cable	Manual(Static IP)
IP	192.168.10.33
Netmask	255.255.255.0
Default Gateway	192.168.10.1
WIFI	Manual(Static IP)
IP	192.168.10.55
Netmask	255.255.255.0
Default Gateway	192.168.10.1
Reboot System	<input type="button" value="Reboot"/> <input type="button" value="Shutdown"/>

## ASTERIX CAT21 data

ADSB-RE1090P supports output Asterix CAT021 data in accordance with EUROCONTROL ASTERIX standard format, in binary format. The original binary data and the decoded data format as below (the decoded data is just to show you what it is, not real output):

```

1 15 00 34 f5 1b 2b 2b c1 20 80 04 00 02 01 1c
2 b4 0a 52 c4 c0 78 07 c4 41 44 e4 41 44 97 00 05
3 6b 05 02 01 3d 06 e0 ac 67 41 44 e4 0d 33 b6 cb
4 7d e0 00 6e
    
```

DataItem	Name	Size	Summary
I021/010	Data Source Identifier	02	SAC:128 SIC:128
I021/040	Target Report Descriptor	01	TARGET:NORMAL
I021/161	Track Number	02	TRACK_NUM:0002
I021/015	Service Identification	01	SVC_ID:001
I021/130	Position in WGS84 Coordinates	06	WGS84:402150N1162336E
I021/080	Target Address	03	ADDR:7807C4
I021/073	Time of Message Reception for Position	03	TOD:09:16:57.781
I021/075	Time of Message Reception for Velocity	03	TOD:09:16:57.179
I021/090	Quality Indicators	01	NUCR:0 NUCP:0
I021/070	Mode-3/A Code in Octal Representation	02	MODE_3/A:2553
I021/145	Flight Level	02	LEVEL:320.50FL
I021/155	Barometric Vertical Rate	02	VR:1981.25FT/M
I021/160	Ground Vector	04	SPD:386.72KT AGL:242.44DEG
I021/077	Time of ASTERIX Report Transmission	03	TOD:09:16:57.781
I021/170	Target Identification	06	ACID:CSN6277
I021/020	Emitter Category	01	EMITTER:NO_INFO
I021/132	Message Amplitude	01	AMP:110

Configurable parameters as below:

## Adsb Output Asterix

### Cat021 Data Output Network Protocol

udp\_broadcast ▾

### Cat021 data output multicast address

224.0.5.13

### Cat021 data output multicast port

5000

### Cat021 data output UDP address

255.255.255.255

### Cat021 data output UDP port

5000

**Cat021 data output mode**

**Cat021 data output time period**

**Cat021 data version**

**SAC**

**SIC**

Configurable parameters	illustration
Cat021 Data Output Network Protocol	The network protocols used for data output, including UDP unicast, UDP multicast, UDP broadcast and shutdown
Cat021 data output multicast address	Recipient address when output using UDP multicast
Cat021 data output multicast port	Recipient port when output using UDP multicast
Cat021 data output UDP address	Recipient address when output using UDP unicast or broadcast
Cat021 data output UDP port	Recipient port when output using UDP unicast or broadcast
Cat021 data output mode	Data output modes, including data driven mode and periodic mode. In data driven mode, ADSB-RE1090 automatically output data whenever ADS-B track is updated. In periodic mode, each time period, ADSB-RE1090 automatically output data for all tracks, regardless of whether they have been updated or not.
Cat021 data output time period	In periodic mode, the period time in

	milliseconds.
Cat021 data version	ASTERIX CAT021 data version, support V0.23, V0.26, V2.1 and V2.4.
SAC	
SIC	

## CSV plaintext data

ADSB-RE1090P supports plaintext track data output in CSV format, and the units of plaintext data can be imperial or metric.

Each line of plaintext data is formatted as "@CSV plaintext #r\n"

Each line of CSV plaintext contains below data items.

data item	Metric	Imperial
Track number	digit	
Time stamp	In ISO 8601 format in the format yyyy-MM-ddTHH:mm:ss.zzzZ	
ICAO address	in hexadecimal	
Callsign	No more than 8 characters and numbers	
SSR code	in octal	
latitude	in degrees; north is positive and south is negative	
longitude	in degrees; east is positive and west is negative	
Altitude	meter	foot
Ground speed	Km/h	Knot
Heading	in degrees. clockwise to true north	
Vertical speed	meter/min	Feet/min
Air/Ground Indication	GND stands for ground; AIR stands for air	

Below are examples of output data:

```
@3,2020-12-28T20:16:05.539Z,780A29,CPA087,7233,39.7389,116.826,36100,450.504,200.124,,
AIR#
@2,2020-12-28T20:16:05.590Z,7807C4,CSN6277,2553,40.4189,116.531,32175,390.021,242.515
,2496,AIR#
@1,2020-12-28T20:16:05.590Z,780D74,CQH8903,4157,40.3892,117.128,26600,392.237,19.820
9,960,AIR#
```

Configurable parameters as below:

## Adsb Output Csv

### CSV plaintext data output network protocol

### CSV plaintext data output UDP address

### CSV plaintext data output UDP port

### Metric or Imperial

Configurable parameters	illustration
CSV plaintext data output network protocol	The network protocols used for data output, including UDP unicast, UDP broadcast and shutdown
CSV plaintext data output UDP address	Recipient address when output is on UDP unicast or UDP broadcast.
CSV plaintext data output UDP port	Recipient port when output in UDP unicast or UDP broadcast.
Metric or Imperial	

## JSON plaintext track data

ADSB-RE1090P supports plaintext track data output in JSON format. JSON plaintext data use standard HTTP protocol, in standard JSON format. When an HTTP request is received from client, ADSB-RE1090 sends all track information in JSON format. Each track is a JSON object.

ADSB-RE1090 also support JSON plaintext data use TCP. ADSB-RE1090 is TCP server and TCP port is 48887.

Each json object contains below data items.

data item	content	Example
track_id	Track number	84
last_update	Track last update time	2019-10-28T03:04:00.177Z
icao_addr	ICAO 24-bit address	79A053
acid	Call sign	CSN6467

acid_last_update	call sign last update time	2019-10-28T03:03:06.657Z
acid_last_change	Call sign last change time	2019-10-28T03:03:43.978Z
emitter_category	Emitter Category	0
emitter_category_last_update	The Emitter Category last update time	2019-10-28T03:03:06.657Z
emitter_category_last_change	Emitter Category last change time	2019-10-28T03:03:43.978Z
squawk	In octal	7350
squawk_last_update	Squawk last update time	2019-10-28T03:03:33.264Z
latitude	Latitude (degrees)	36.26815020027807
longitude	Longitude (degrees)	120.3369335418052
position_last_update	Position last update time	2019-10-28T03:04:00.177Z
signal_amplitude	Signal amplitude	0
signal_amplitude_last_update	Signal amplitude last update time	2019-10-28T03:04:00.177Z
altitude_baro	Pressure Altitude (ft)	32125
altitude_baro_last_update	Pressure Altitude last update time	2019-10-28T03:04:00.177Z
ground_speed	Ground speed (kn)	464.4588248704076
ground_speed_last_update	Ground speed last update time	2019-10-28T03:03:58.911Z
heading	Heading (degrees)	166.17319186904027
heading_last_update	Heading last update time	2019-10-28T03:03:58.911Z
vertical_rate_baro	Vertical rate (ft/min).	1472
vertical_rate_baro_last_update	Vertical rate last update time	2019-10-28T03:03:58.911Z
ground	Ground Indication	false
ground_last_update	Ground indication last update time	2019-10-28T03:04:00.177Z

Illustration:

1. All timestamps use ISO8601 in format yyyy-MM-ddTHH:mm:ss.zzzZ
2. Multiple JSON objects are combined into an array of JSON objects

Below is an example of output data:

```
[
  {
    "acid": "CSN6467",
    "acid_last_change": "2019-10-28T03:03:06.657Z",
    "acid_last_update": "2019-10-28T03:03:43.978Z",
    "altitude_baro": 32125,
    "altitude_baro_last_update": "2019-10-28T03:04:00.177Z",
    "emitter_category": 0,
    "emitter_category_last_change": "2019-10-28T03:03:06.657Z",
    "emitter_category_last_update": "2019-10-28T03:03:43.978Z",
    "ground": false,
    "ground_last_update": "2019-10-28T03:04:00.177Z",
```



```
"ground_speed_last_update": "2019-10-28T03:03:58.911Z",
"groupd_speed": 464.4588248704076,
"heading": 166.17319186904027,
"heading_last_update": "2019-10-28T03:03:58.911Z",
"icao_addr": "79A053",
"last_update": "2019-10-28T03:04:00.177Z",
"latitude": 36.26815020027807,
"longitude": 120.3369335418052,
"position_last_update": "2019-10-28T03:04:00.177Z",
"signal_amplitude": 0,
"signal_amplitude_last_update": "2019-10-28T03:04:00.177Z",
"squawk": "7350",
"squawk_last_update": "2019-10-28T03:03:33.264Z",
"track_id": 84,
"vertial_rate_baro": 1472,
"vertial_rate_baro_last_update": "2019-10-28T03:03:58.911Z"
},
{
  "altitude_baro": 875,
  "altitude_baro_last_update": "2019-10-28T03:03:58.152Z",
  "ground": false,
  "ground_last_update": "2019-10-28T03:03:58.152Z",
  "ground_speed_last_update": "2019-10-28T03:03:58.656Z",
  "groupd_speed": 133.6637572418193,
  "heading": 344.82007256547377,
  "heading_last_update": "2019-10-28T03:03:58.656Z",
  "icao_addr": "7802F4",
  "last_update": "2019-10-28T03:04:00.177Z",
  "latitude": 36.20199947033898,
  "longitude": 120.39484551612368,
  "position_last_update": "2019-10-28T03:03:58.152Z",
  "signal_amplitude": 0,
  "signal_amplitude_last_update": "2019-10-28T03:03:58.656Z",
  "squawk": "0761",
  "squawk_last_update": "2019-10-28T03:03:57.387Z",
  "track_id": 85,
  "vertial_rate_baro": -576,
  "vertial_rate_baro_last_update": "2019-10-28T03:03:58.656Z"
},
{
  "acid": "CES9928",
  "acid_last_change": "2019-10-28T03:03:51.062Z",
  "acid_last_update": "2019-10-28T03:03:57.136Z",
  "altitude_baro": 7550,
```

```

    "altitude_baro_last_update": "2019-10-28T03:03:59.926Z",
    "emitter_category": 0,
    "emitter_category_last_change": "2019-10-28T03:03:51.062Z",
    "emitter_category_last_update": "2019-10-28T03:03:57.136Z",
    "ground": false,
    "ground_last_update": "2019-10-28T03:03:59.926Z",
    "ground_speed_last_update": "2019-10-28T03:03:59.672Z",
    "groupd_speed": 224.50167037240502,
    "heading": 176.16894863894333,
    "heading_last_update": "2019-10-28T03:03:59.672Z",
    "icao_addr": "79A03F",
    "last_update": "2019-10-28T03:03:59.926Z",
    "latitude": 36.32762145996094,
    "longitude": 120.34303665161133,
    "position_last_update": "2019-10-28T03:03:59.926Z",
    "signal_amplitude": 0,
    "signal_amplitude_last_update": "2019-10-28T03:03:59.926Z",
    "squawk": "3105",
    "squawk_last_update": "2019-10-28T03:03:50.807Z",
    "track_id": 87,
    "vertial_rate_baro": -64,
    "vertial_rate_baro_last_update": "2019-10-28T03:03:59.672Z"
  }
]

```

The parameters of the JSON plaintext track output are fixed parameters and cannot be configured. Parameters as below:

parameters	illustration
JSON plaintext track HTTP address	ADSB-RE1090 IP address
JSON plaintext track HTTP port	48888
JSON plaintext track URL	http:// [ADSB-RE1090 IP Address]: 48888/
JSON plaintext TCP port (ADSB-RE1090 is TCP server).	48887

## ADS-B and Mode-S raw message data

ADSB-RE1090P supports output of raw, unprocessed DF data received, which can be output in binary or text. The content of the binary format and the text format are exactly the same, the binary format packet is smaller; the text format packet is larger but convenient for direct reading and analysis.

Below is an example of output data:

```
112-bit long message
```

8d780dd199440eb86004194d4662

Short message of 56 bits

02e1909819fdb0

Configurable parameters as bellow:

## Adsb Output Modes

### ADS-B and Mode-S raw data output network protocol

udp\_broadcast ▾

### ADS-B and Mode-S raw data output UDP address

255.255.255.255

### ADS-B and Mode-S raw data output UDP port

5110

### ADS-B and Mode-S raw data format

binary ▾

Configurable parameters	illustration
ADS-B and Mode-S raw data output network protocol	The network protocols used for data output, including UDP unicast, UDP broadcast and shutdown
ADS-B and Mode-S raw data output UDP address	Recipient address when output using UDP unicast or UDP broadcast
ADS-B and Mode-S raw data output UDP port	Recipient port when output using UDP unicast or UDP broadcast
ADS-B and Mode-S raw data format	binary or text

## AVR Data

The AVR format contains timestamp in addition to the raw DF data. The AVR format parameters are fixed and cannot be configured. As below:

parameters	illustration
AVR format raw data output network protocol	TCP server
AVR format raw data output TCP port	7000
AVR format raw data output time-stamp switch	open

Below is an example of output data:

AVR format

@9D66000226C88D780426585D62E094FD878F4E10;

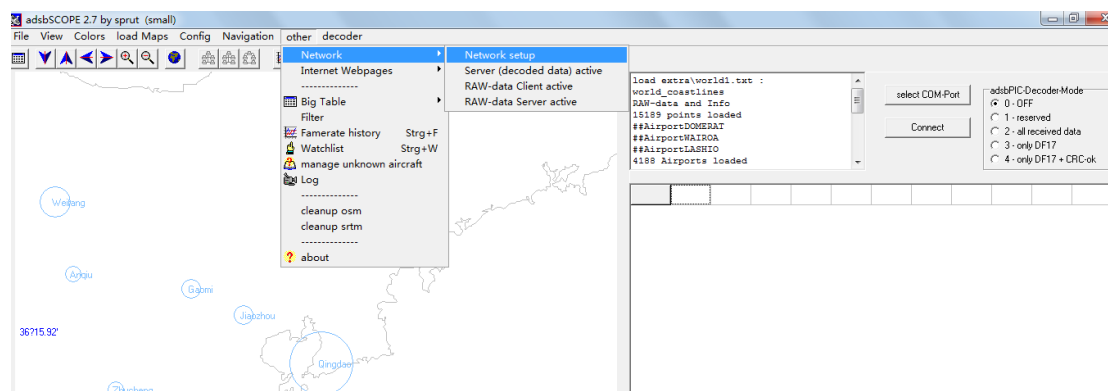
@9D66000D9878280007838ABD3C;

## 8. ADS-B display software ADSBSCOPE

ADSB-RE1090P can use the display software adsbscope

Double-click to open adsbscope.

Click other in the menu bar, and then click Network setup under Network, as shown in the figure below.

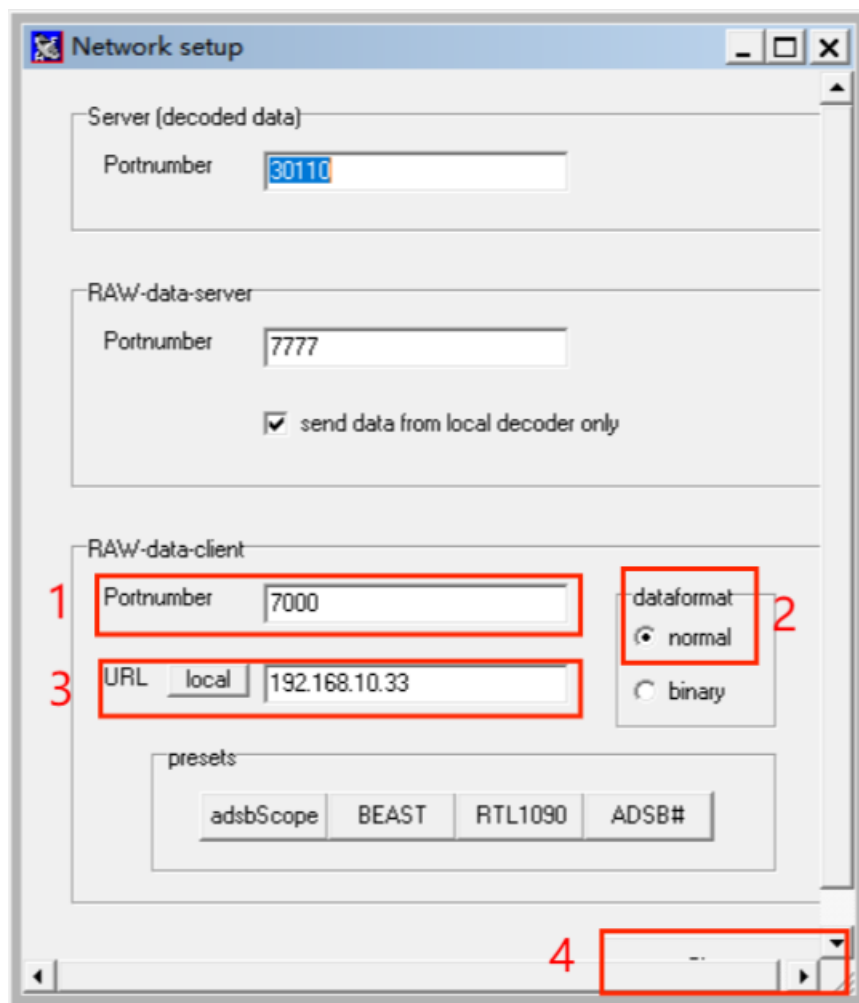


Set <RAW-data-client>, <Portnumber> is 7000.

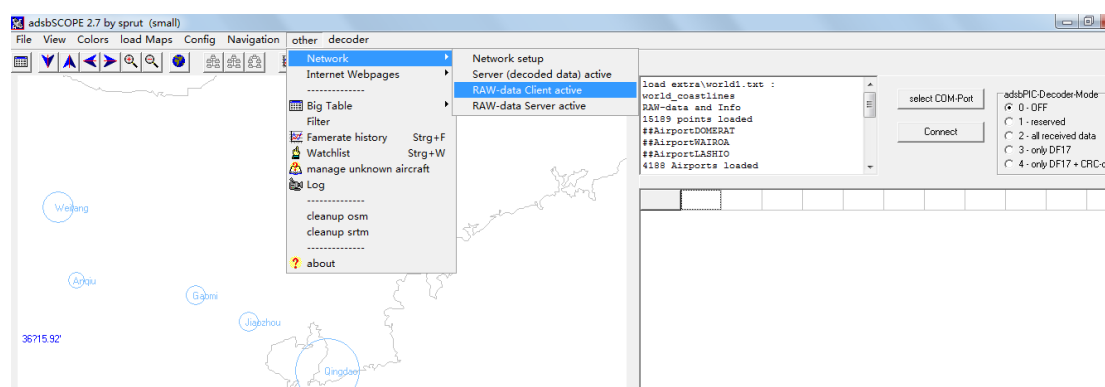
<dataformat> selects <normal>.

<URL> should be the IP address of ADSB-RE1090.

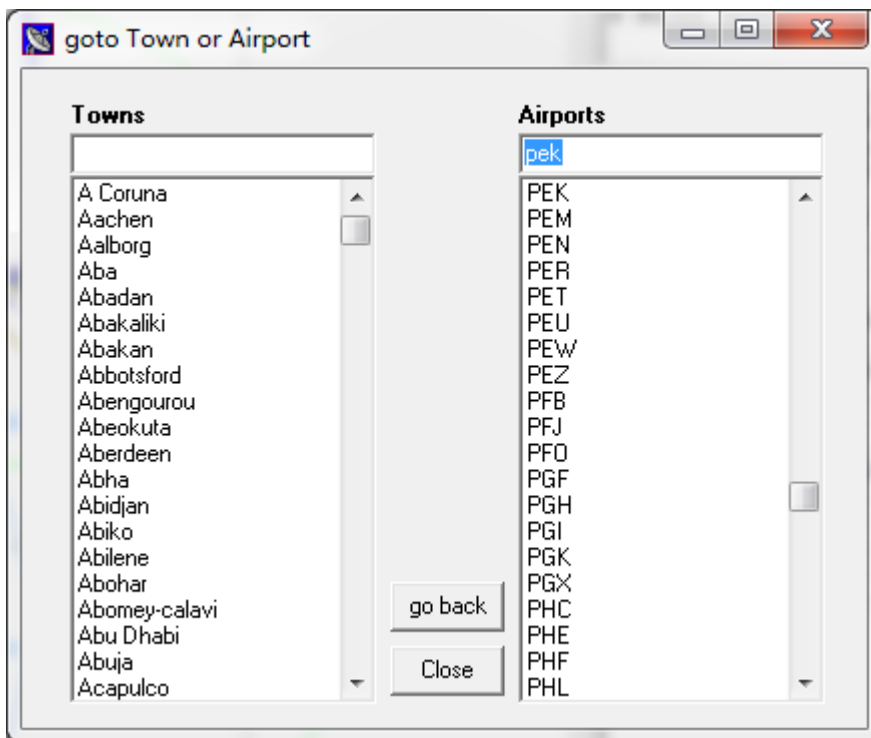
Click <Close>.



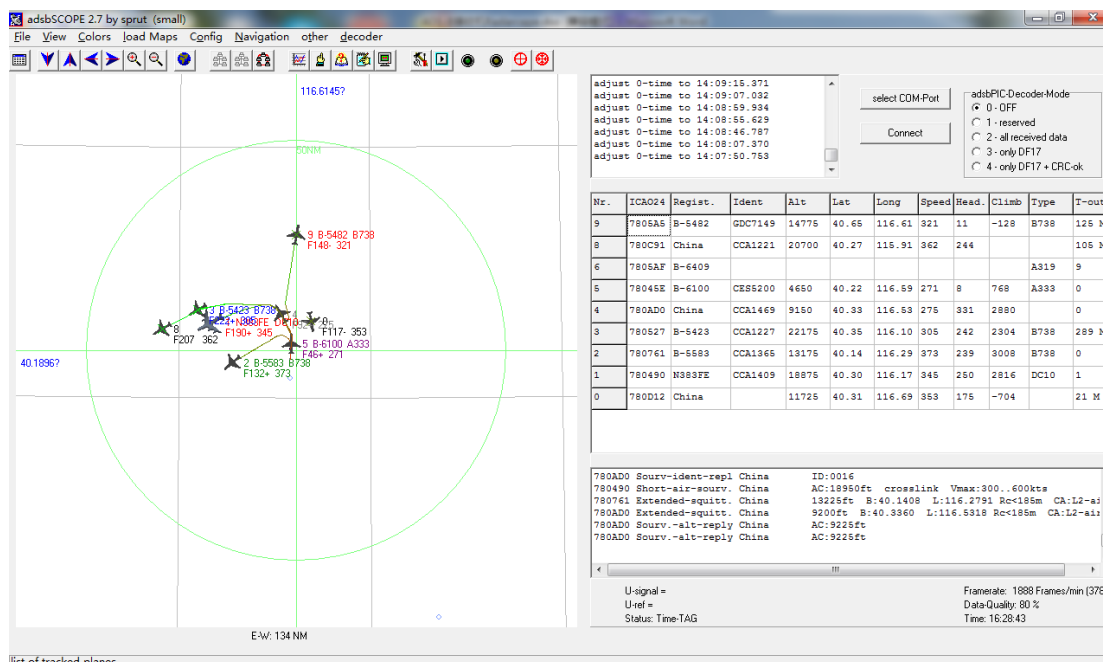
Click other in the menu bar, and then click RAW- Data Client active under Network, as shown in the figure below.



To see the aircrafts, set up an airport close to yourself. Goto town or airport under navigation, as shown in the figure below. PEK is Beijing airport, as an example.



Done!



## 9. Antenna

- Omnidirectional
- Frequency: 1060-1120MHz
- Bandwidth: 60MHz
- Gain: 6 dBi

- VSWR: <1.5
- Impedance: 50 ohms
- Polarization: Vertical
- Length: 60 cm
- Weight (Without mast clamp): 360 g
- Weight (With mast clamp): 510 g
- Connector: N Female
- Operating Temperature: -40 to +85 degrees
- Rated Wind Velocity: 60 m/s